

# Buckinghamshire

Calvert, Steeple Claydon, Twyford and Charndon area

# HS2

## CONTACTING HS2

Your HS2 point of contact is:

**Chris James**  
[chris.james@ekfb.com](mailto:chris.james@ekfb.com)

Chris is the point of contact for Buckinghamshire Council members and parish council chairs in the Calvert, Steeple Claydon, Twyford and Charndon areas.

You can contact Chris with any queries or to request information on the HS2 project.

For urgent or out of hours enquiries please contact our helpdesk.

Further details on how to contact HS2:  
[hs2.org.uk/in-your-area/contact-us/](https://hs2.org.uk/in-your-area/contact-us/)

We have a complaints process which ensures that we deal with all complaints efficiently and in the most appropriate way. Find out more:  
[hs2.org.uk/how-to-complain](https://hs2.org.uk/how-to-complain)

## HS2 IN YOUR AREA

HS2 contractors working in your area:



Our main works contractor in your area is EKFB. They will be building the railway in this area, including the construction of the Calvert Cutting to take HS2 under East West Rail.

Fusion is our enabling works contractor and they undertake important early work for HS2 such as archaeology and highway improvements.

## YOUR LOCAL HS2 WEBSITE

Community website with updates on local construction and engagement activities:

[www.HS2inBucksandOx.co.uk](http://www.HS2inBucksandOx.co.uk)

Residents can sign up to receive news alerts.

**The HS2 Helpdesk is available all day, every day** for any questions you may have.

Freephone: **08081 434 434**  
Minicom: **08081 456 472**  
Email: [hs2enquiries@hs2.org.uk](mailto:hs2enquiries@hs2.org.uk)  
Online: [hs2.org.uk/contact-form](https://hs2.org.uk/contact-form)

The Helpdesk is the best point of contact for any immediate or emergency matters.

## USEFUL INFORMATION

### HS2 Community & Business Funds

Find out how groups can apply and see projects which have received funding in your area: [hs2funds.org.uk](https://hs2funds.org.uk)

### HS2 Jobs Board

Find out about opportunities to work on HS2 and vacancies across the HS2 supply chain:  
[hs2.org.uk/careers/careers-with-our-supply-chain](https://hs2.org.uk/careers/careers-with-our-supply-chain)

### Support for local business

How local businesses in your area can get involved in the project:  
[hs2.org.uk/local-business](https://hs2.org.uk/local-business)

# See when and where HS2 works are taking place in your area

## HS2

Enter your search in the field below or zoom to a location on the map to view information about HS2 works in your area.

Filter our work items by:

[Search for places or addresses](#)

8 work items

### [Site preparation works at Calvert](#)

2 November 2020 to 30 April 2021

Distance: 0.26km

Ref: FUS\_AWN\_0106

### [Steeple Claydon construction activities February 2021](#)

8 March 2021 to 12 March 2021

Distance: 1.32km

Ref: FUS\_AWN\_0180HS2-EW-Fusion - Ph1-Ar-Ce-C2-Prog-works-1-03/08/2021

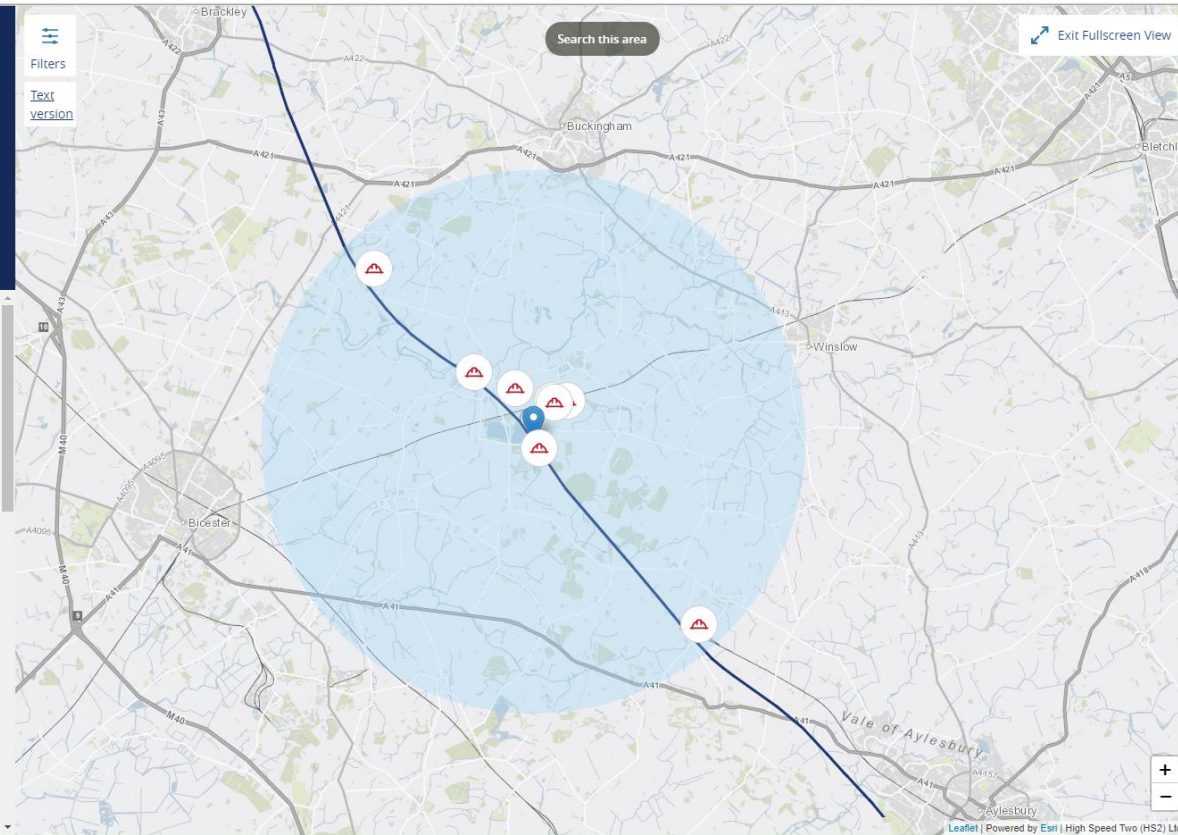
### [Notice of utility diversion works, Addison Road](#)

5 October 2020 to 31 March 2021

Distance: 1.33km

Ref: HS2-EW-FUS-Ph1-Ar-Ce-C2-UT-25-08/03/2020

### [Steeple Claydon construction](#)



## IN YOUR AREA INTERACTIVE MAP

You can use our interactive map to **view the HS2 route through your area** and find information about current and planned construction works.

Our map brings all of our works notifications together in one place.

Each work item, highlighted on the map with a 'hard hat' icon, lets you know:

- the location and planned duration of the works
- which contractor is delivering it, and
- what kind of activity they are doing, e.g. setting up a compound or an archaeological dig.

You can easily see any other works we might be doing nearby, also pinpointed with an icon.

You can find the HS2 interactive route map online at [www.hs2.org.uk/in-your-area/map](http://www.hs2.org.uk/in-your-area/map)

[CLICK HERE TO GO DIRECTLY TO YOUR AREA ON THE MAP](http://www.hs2.org.uk/in-your-area/map)